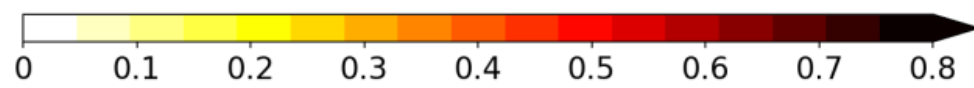
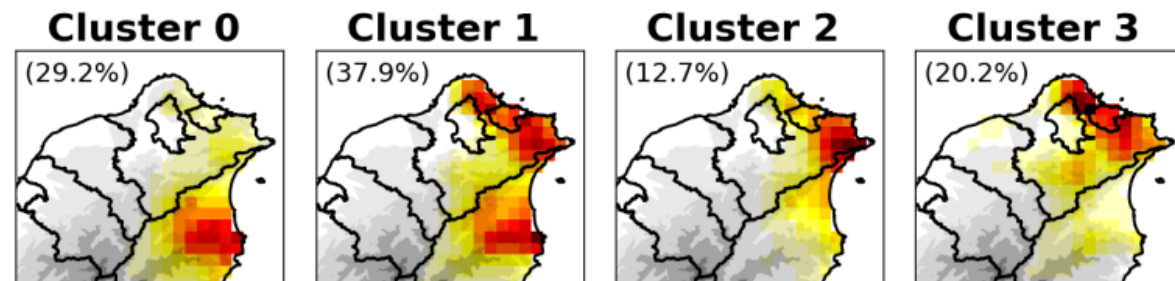


# Extreme Precip. in N Taiwan under the Winter Monsoon

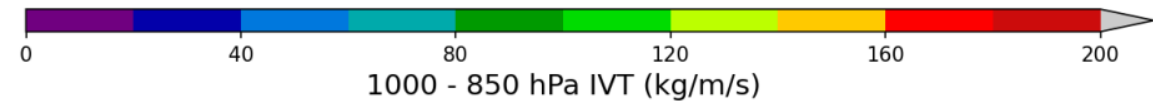
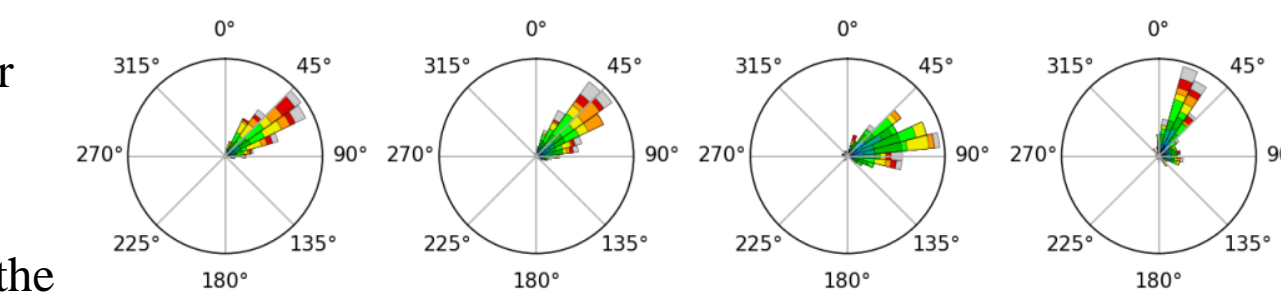
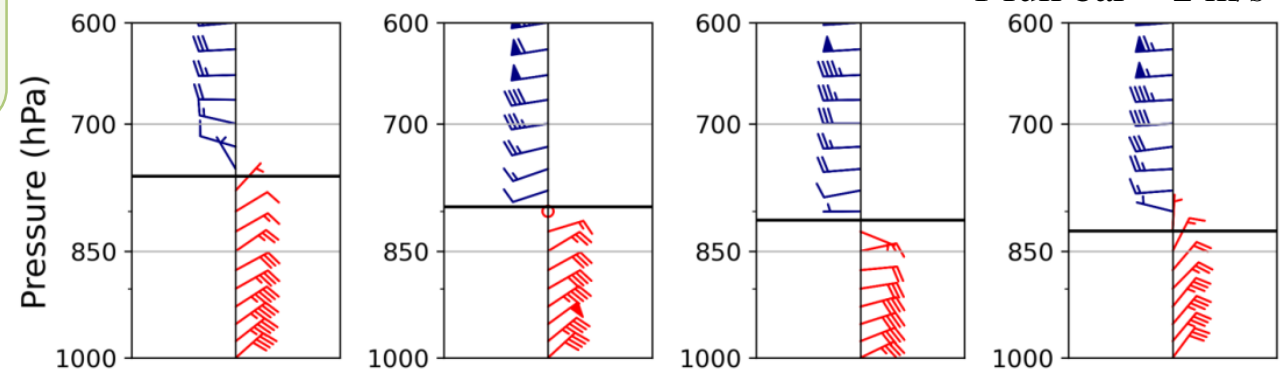
Huai-Yi Huang

- The 4 rain patterns are clustered with hierarchical clustering.
- The associated environments are different in easterlies thickness and integrated vapor transport direction.
- Sensitivity tests using TaiwanVVM.

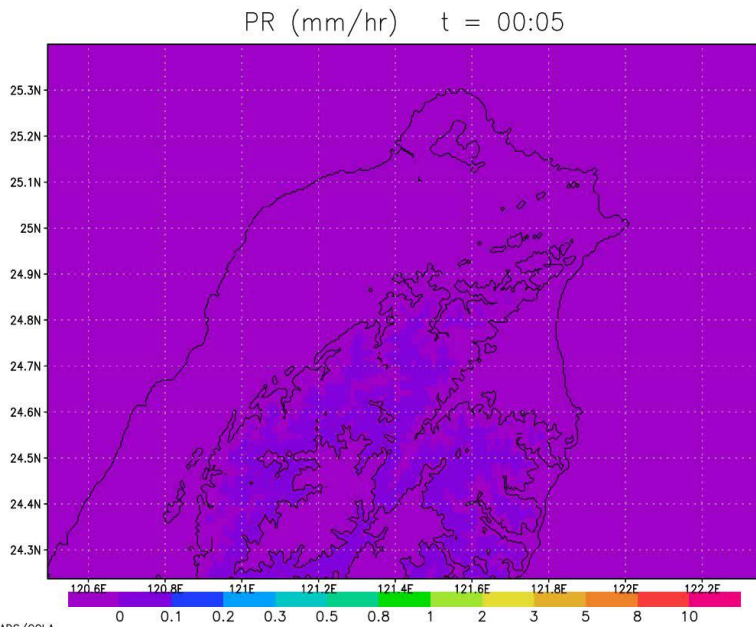


Norm. Precipitation

1 full bar = 2 m/s



1000 - 850 hPa IVT (kg/m/s)



Cluster mean of  
(a) normalize precipitation,  
(b) wind profile for Ishigaki sounding, and  
(c) integrated vapor transport in the boundary layer.