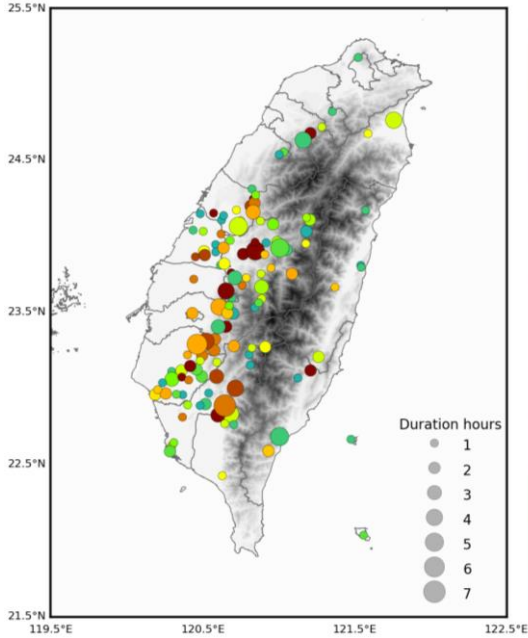
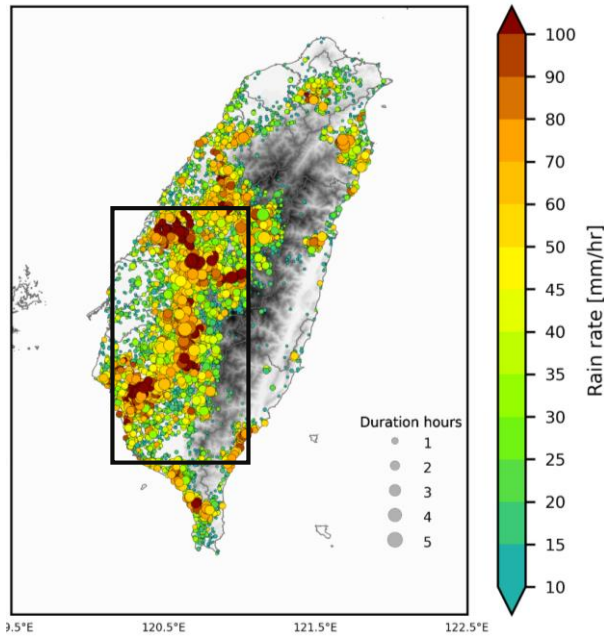


2005-2014 May-Sep.(38 dates)  
Max Duration hours & Max Rain Rate

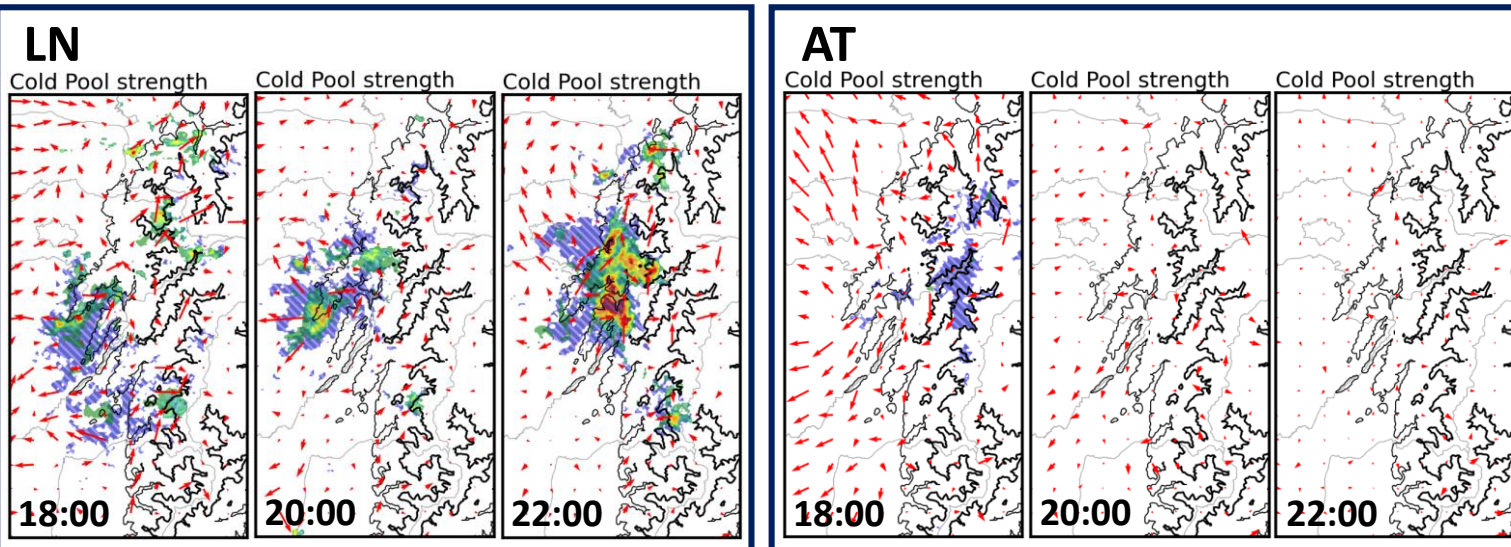
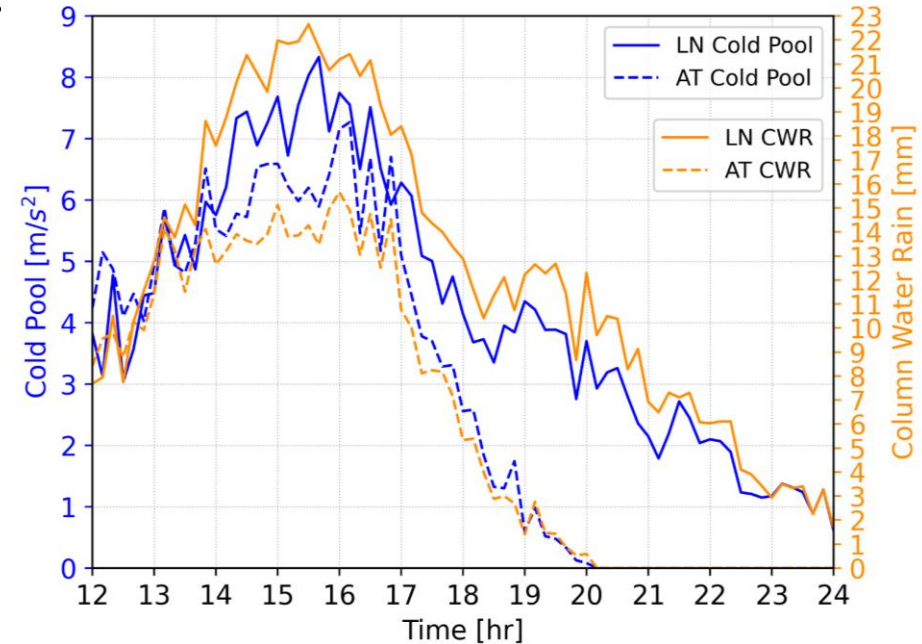


TWVVM LN  
Max Duration Hours & Rain Rate



## Speaker: Hsuan-Yu Liao

- ◆ Following the concept of the cold pool from Feng et al. (2015) and Wu et al. (2019), we assume the cold pool would lead the LN events.
- ◆ With the complex topography, the cold pool would interact with **the terrain, the surface flow and other cold pools.**



sfc flow  
 500m  
 1500m  
 ◆ Blue hatch: cold pool > 5m/s<sup>2</sup>

- ◆ LN events have **stronger** cold pool and the cold pool exist **longer** than AT events
- ◆ The rainfall or the column water rain of LN events is much larger than AT events.